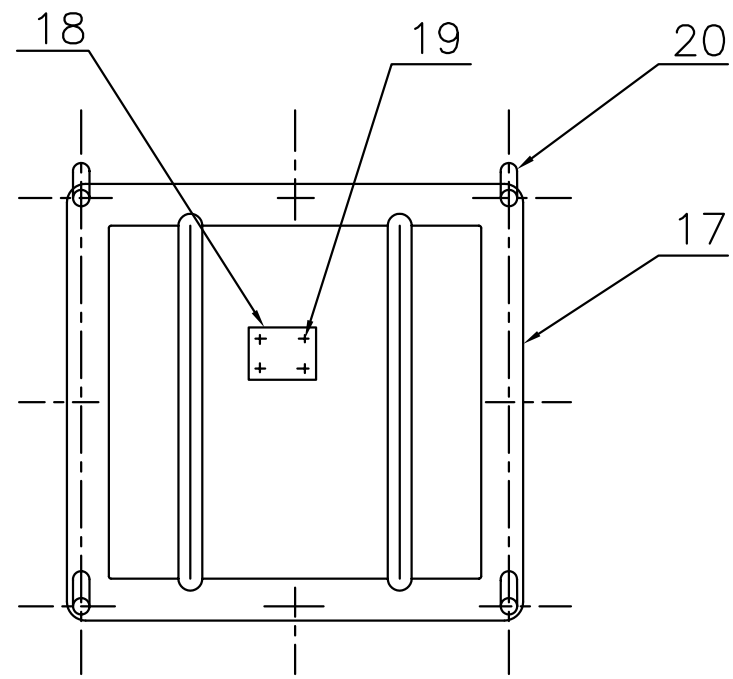


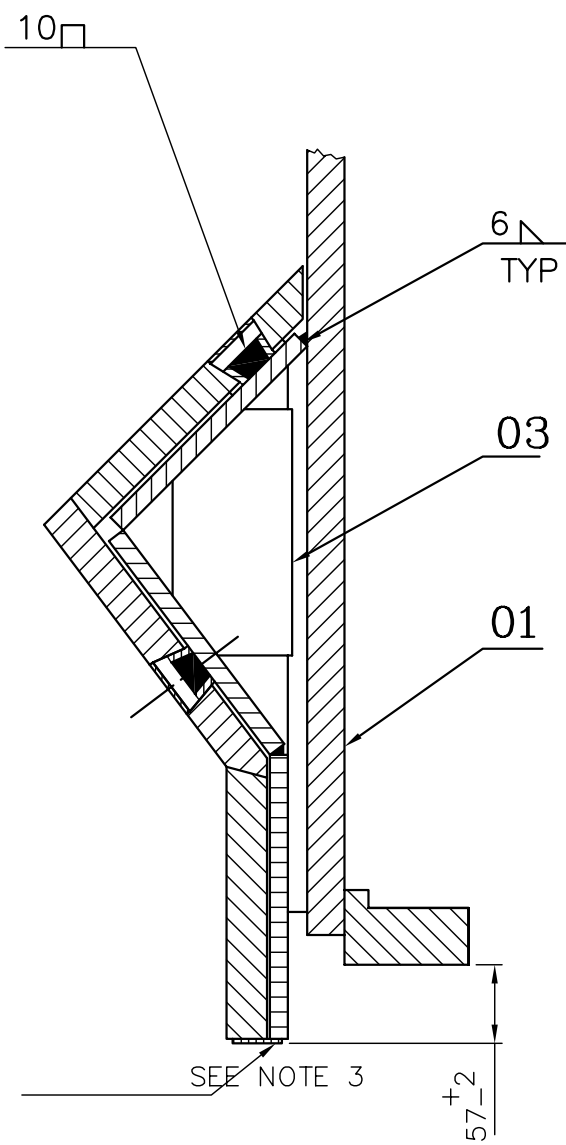
FIRST ANGLE PROJECTION

(ALL DIMENSIONS ARE IN mm)

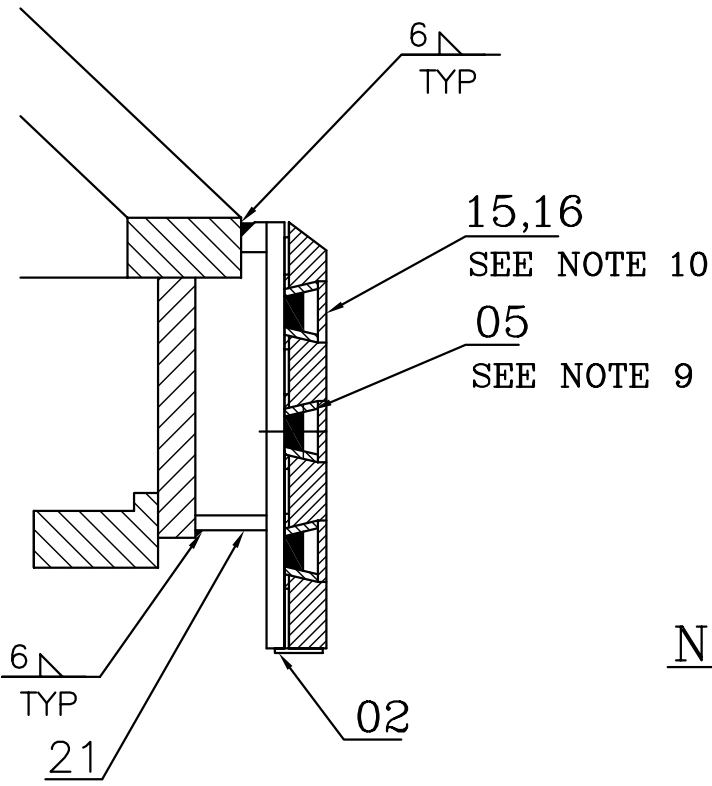
WPS:WE006



VIEW-B

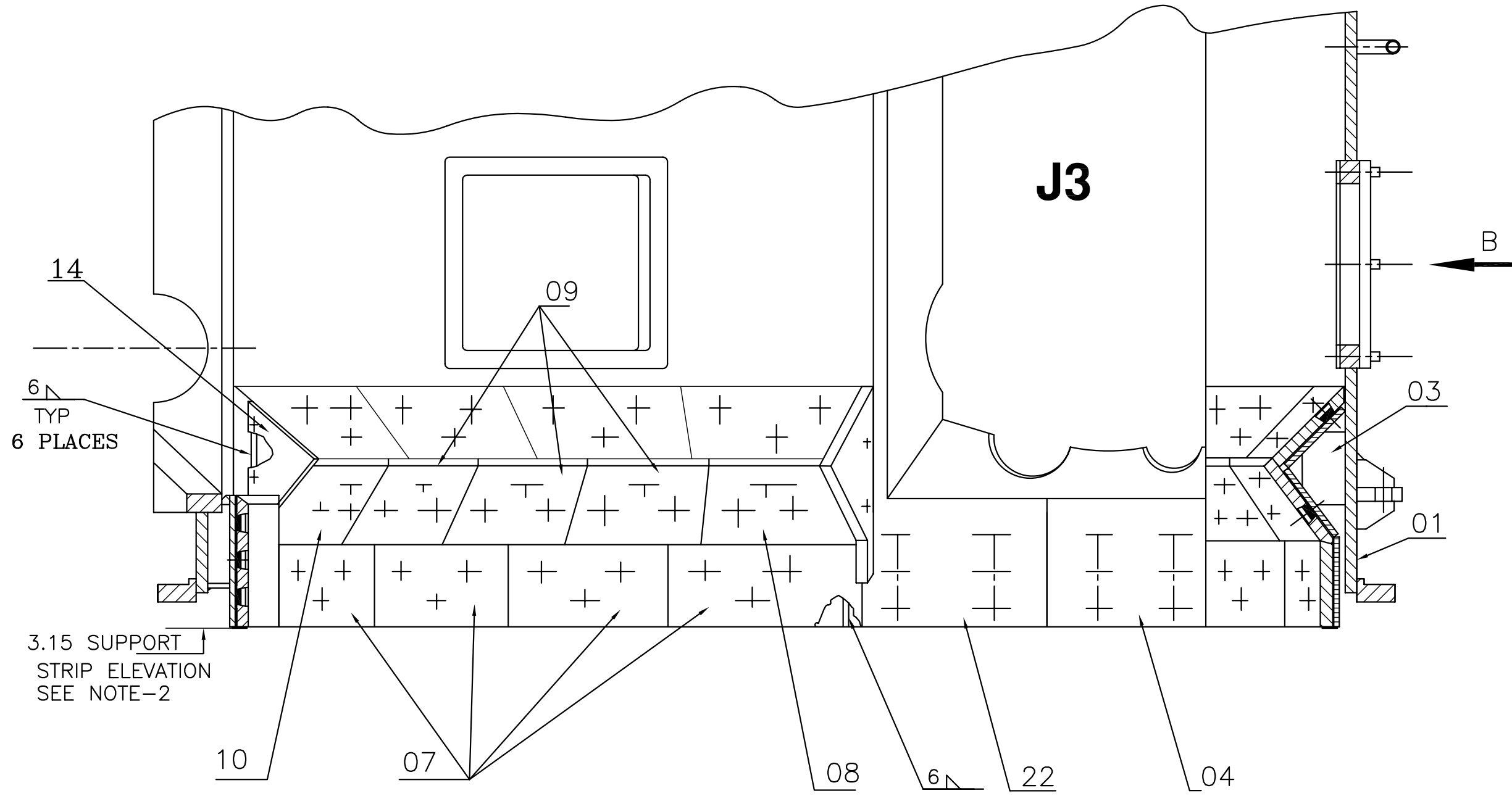


SECTION-CC

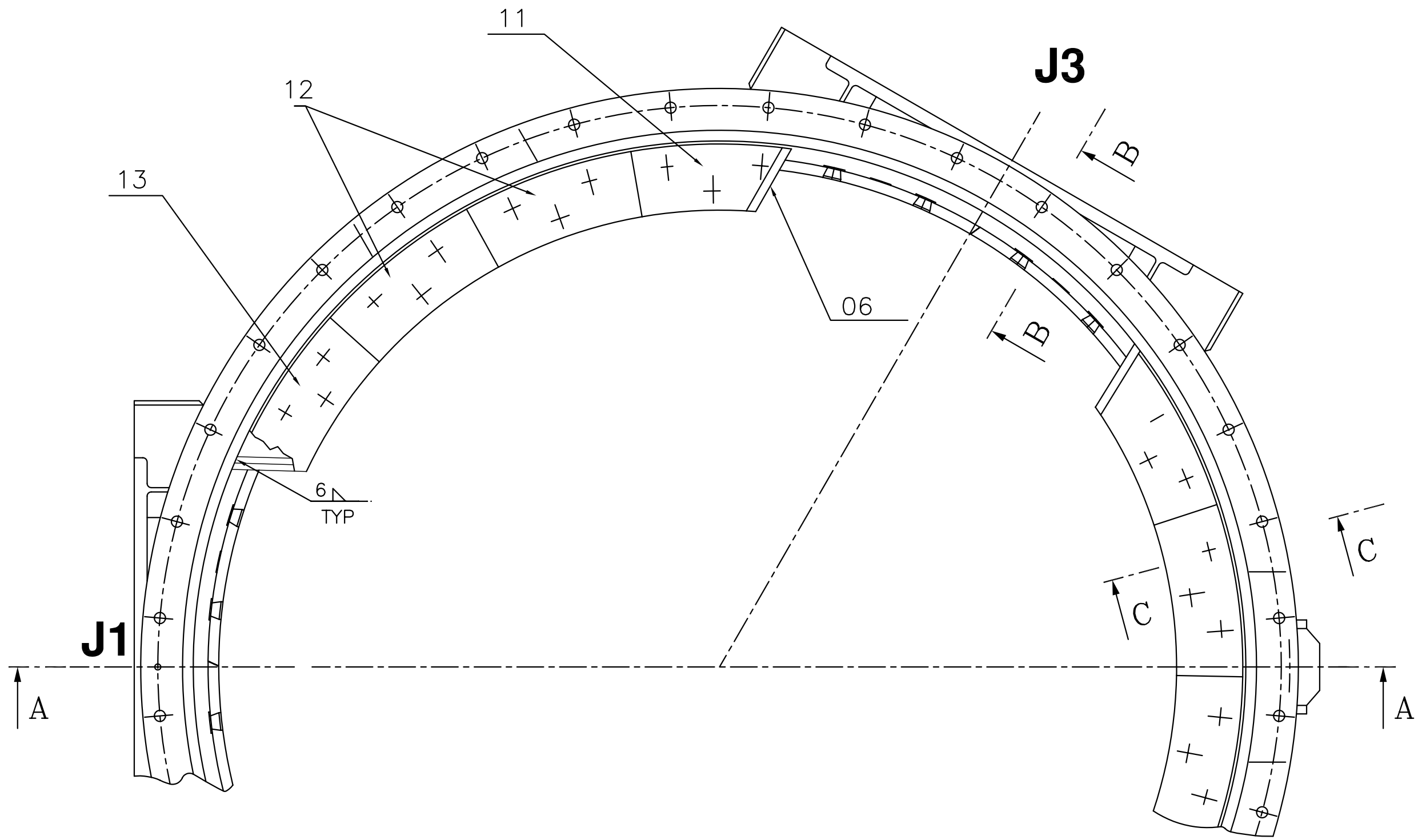


WELD TO SUIT ASSY

SECTION-BB



SECTION-AA



NOTES:

- CENTER INTERMEDIATE LINER SUPPORT PLATE (ITEM 2) WITH JOURNAL OPENING AND WELD AS SHOWN(TYP. 3 PLACES)
- CENTER DEFLECTOR LINER SUPPORT PLATE (ITEM 3) BETWEEN INTERMEDIATE LINER SUPPORT PLATES MAINTAINING ELEVATION 57 OF SUPPORT STRIP AND WELD AS SHOWN (3 PLACES)
- INSTALL INTERMEDIATE LINER (ITEM 4) WORKING FROM LEFT TO RIGHT.MAINTAIN APPROX. 3 mm GAP BETWEEN LINERS. (TYP 3 PLACES)
- INSTALL DEFLECTOR SIDE LINER (ITEM 6). MAINTAIN APPROX. 3mm GAP WITH SEPARATOR BODY (ITEM 1).TRIM IF REQUIRED TO SUIT INTERMEDIATE LINER
- INSTALL BOTTOM ROW OF DEFLECTOR LINERS (ITEM 7).WORK FROM LEFT TO RIGHT STARTING ADJACENT TO INTERMEDIATE LINER.
- INSTALL MIDDLE ROW OF DEFLECTOR LLINERS (ITEMS 8,9 & 10) WORKING FROM LEFT TO RIGHT .
- INSTALL TOP ROW OF DEFLECTOR LINERS (ITEMS 11,12 & 13) WORKING FROM LEFT TO RIGHT.
- INSTALL DEFLECTOR SIDE LINER (ITEM 14). FRONT EDGES OF DEFLECTOR SIDE LINER ARE APPROX 3MM FROM BACK SIDE OF DEFLECTOR LINERS (ITEMS 10 & 13). EDGES OF 10 & 13 SHOULD OVERHANG THE DEFLECTOR SIDE LINER (ITEM 14) BY APPROX 6 MM
- SEE DRG 3-61-370-00838 FOR APPLICATION OF WELD PLUGS (ITEM 5)
- AFTER WELD PLUG APPLICATION APPLY SILICONE CEMENT TO TO CERAMIC PLUGS AND INSTALL AS SHOWN IN SECTION BB.
- MAINTAIN APPROX 3mm GAP BETWEEN LINERS.TRIM LINERS IF REQUIRED. FILL THE GAP BETWEEN LINERS WITH RTV SEALER OR EQUI.
- TORQUE ALL FASTENERS AND APPLY LOCTITE AT FINAL ASSY AS PER DRG. 2-61-262-00817

ITEM NO.	DESCRIPTION	DRAWING NO.	VAR. NO.	RAW MATERIAL SIZE OR CASTING DRG. NO. OR FORGING DRG. NO.	MATERIAL CODE	NET WT.	GROSS WT.
22	INTERMEDIATE LINER-2	2-61-370-02868			AA19503	26.70	3
21	PL 10 X 65 X 65				AA1011819074	0.33	
					AA10119	9	
20	HANDLE NUT M16	4-61-376-00108				0.22	24
19	DRIVE SCREW 4X12.5				HY7126938640	0.001	
					AA7126938	4	
18	COMPANY MONOGRAM PLATE				AA7250101048	0.030	
					AA7250101	1	
17	ACCESS DOOR	2-61-370-00768			BA9110309039	62.000	
					AA19703	3	
16	SILICONE CEMENT SILASTIC # 732	A-917				1.25	1
15	CERAMIC PLUG	A-900				0.023	141
14	DEFLECTOR SIDE LINER (TRAILING)	2-61-370-00796			BA9114134357	4.00	
					AA19741	3	
13	DEFLECTOR LINER (TOP)	2-61-370-00792			BA9114134349	18.500	
					AA19741	3	
12	DEFLECTOR LINER (TOP)	2-61-370-00790			BA9114134322	20.300	
					AA19741	6	
11	DEFLECTOR LINER (TOP)	2-61-370-00791			BA9114134330	18.400	
					AA19741	3	
10	DEFLECTOR LINER (MID)	2-61-370-00789			BA9114134314	18.83	
					AA19741	3	
09	DEFLECTOR LINER (MID)	2-61-370-00787			BA9114134292	19.760	
					AA19741	9	
08	DEFLECTOR LINER (MID)	2-61-370-00788			BA9114134306	18.760	
					AA19741	3	
07	DEFLECTOR LINER (LOWER)	2-61-370-00786			BA9114134284	13.300	
					AA19741	12	
06	DEFLECTOR SIDE LINER (LEADING)	2-61-370-00795			BA9114134373	8.000	
					AA19741	3	
05	WELDING PLUG	4-61-370-00805			AA1011711133	0.050	
					AA10111	141	
04	INTERMEDIATE LINER	2-61-370-02458			BA9210333560	26.70	
					AA19503	3	
03	DEFLECTOR LINER SUPPORT PLATE	0-61-370-00180				85.71	3
02	INTERMEDIATE LINER SUPPORT PLATE	2-61-370-02254				30.42	3
01	SEPARATOR BODY	0-61-370-00579				3534.00	1

THE FOLLOWING CONDITIONS APPLY EXCEPT OTHERWISE STATED.

- REF. TO HY0230261 FOR UNSPECIFIED TOLERANCES.
- CHAMFER M/CD. SHARP EDGES AT 45°.
- INTERNAL M/CD. CORNER RADI 1 TO 0.7
- THE SURFACE ROUGHNESS WHERE-EVER NOT SHOWN SHALL BE TAKEN FROM THE SURFACE ROUGHNESS SHOWN OUT SIDE THE BACK SLASH GIVEN OR THE TOP MOST RIGHT CORNER OF THE DRG.

TYPE OF PRODUCT
NAME OF CUSTOMER/PROJECT

703 XRP BOWL MILL

DRN.	NAME	SIGN.	DATE	NO.OF VAR.
CHD.	E.M.ASHOK			—
APPD.	S.GHATGE			—
	B.T.RAJAN			—

DEPT.	UNTO.	DMS.	GR.	SCALE	WEIGHT (KG)	REF. TO ASSY DRG.	ITEM NO.	NO.OF ITEMS
446	9/M/1			1:10	4967.13		—	—

TITLE	CARD CODE	DRAWING NO.	REV.
SEPARATOR BODY AND LINER ASSY		1-61-370-01219	01
		SHEET NO.	NO OF SHEETS